

5818 ROUTE 9H & 23 HUDSON, NY 12534

SEPTIC TANKS
 DRY WELLS
 D-BOXES
 CATCH BASINS

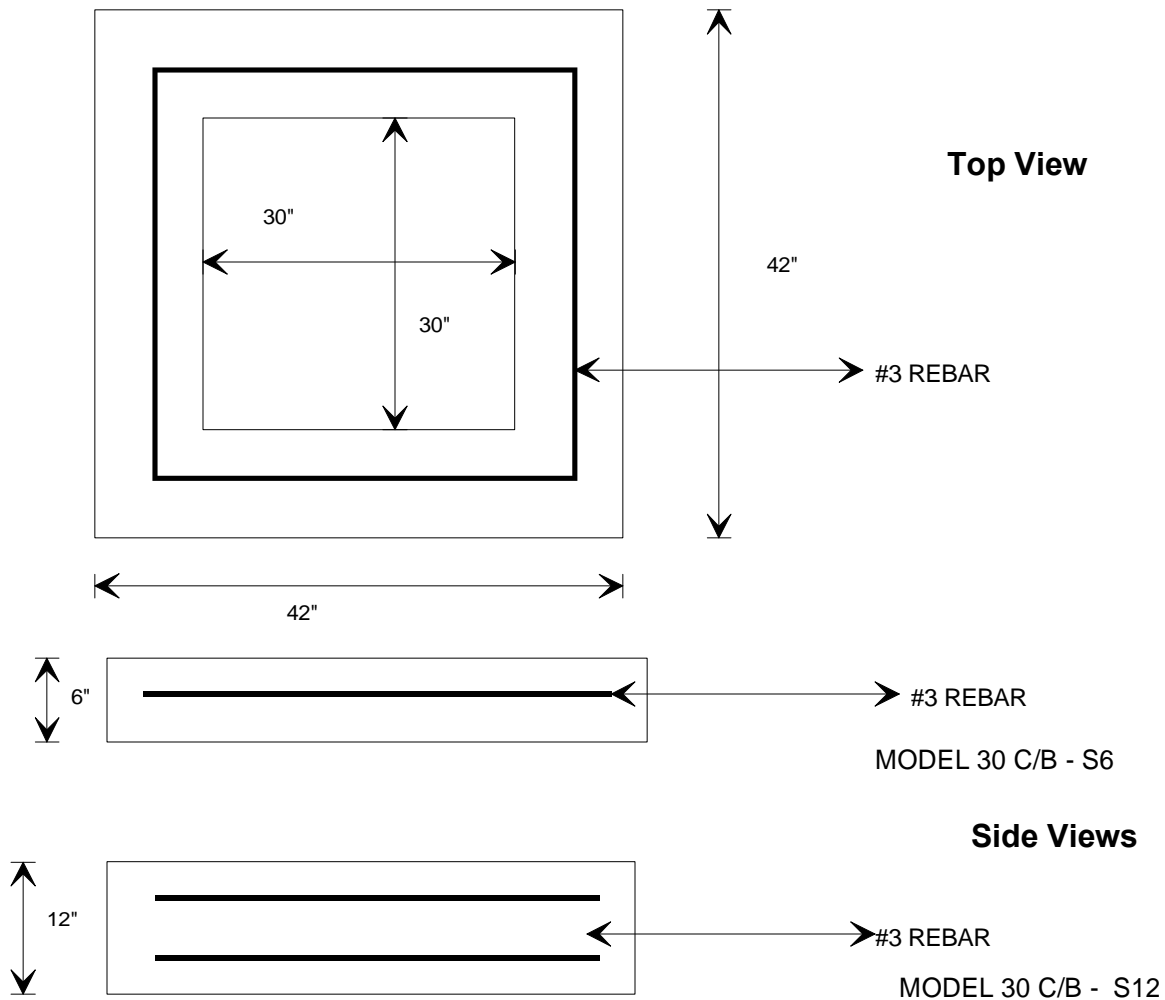
**KEELER
 VAULT
 CO.**

STEPS
 CURBING
 WHEEL STOPS
 CUSTOM WORK

PRECAST CONCRETE PRODUCTS

518-851-6281
518-851-9134
FAX 518-851-7835

**30 C/B SHIMS
 USED TO BRING CATCH BASINS TO GRADE**



**WEIGHT: 6"-430 LBS.
 12"-875 LBS.**

Specifications: Concrete minimum strength- 5000 psi at 28 days
 Air entrainment- minimum 5%
 Reinforcement- #3 Rebar