

5818 ROUTE 9H & 23 HUDSON, NY 12534

SEPTIC TANKS
 DRY WELLS
 D-BOXES
 CATCH BASINS

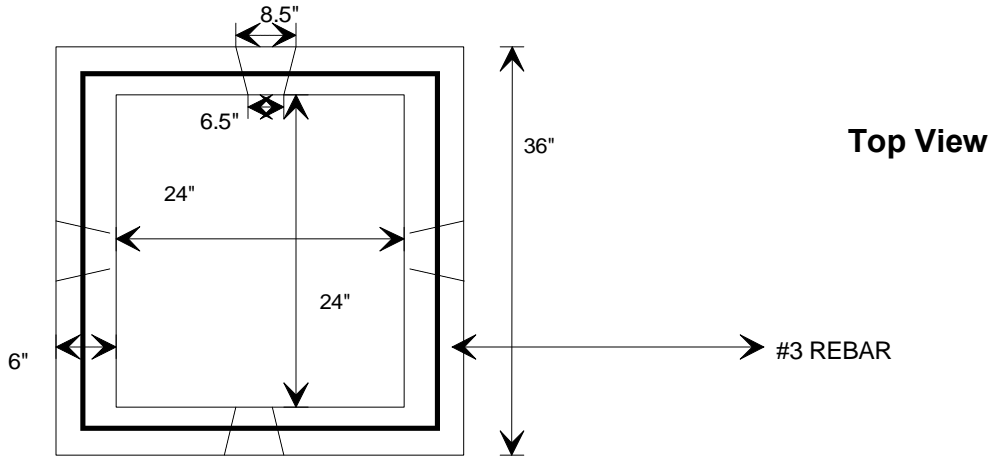
**KEELER
 VAULT
 CO.**

STEPS
 CURBING
 WHEEL STOPS
 CUSTOM WORK

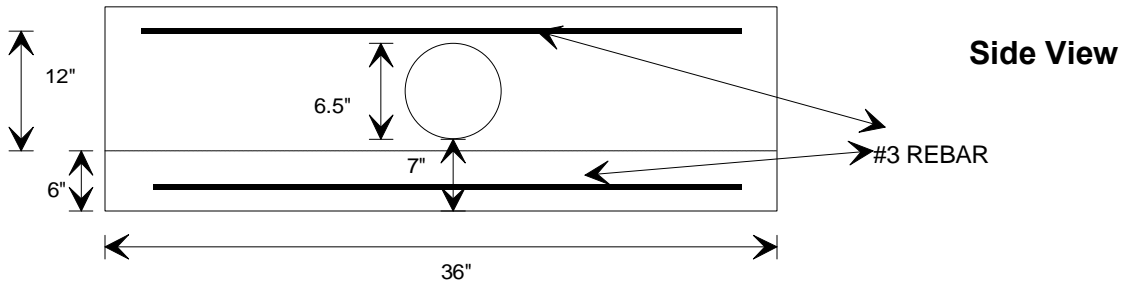
PRECAST CONCRETE PRODUCTS

518-851-6281
 518-851-9134
 FAX 518-851-7835
 www.keelervault.com

24" x 24" x 12" I.D. CATCH BASIN
 MODEL 24C/B SHORT



2-#3 rebar bent for recessed pickups
 8 pcs-34" #3 rebar



WEIGHT: 1050 LBS.

Specifications: Concrete minimum strength- 5000 psi at 28 days
 Air entrainment- minimum 5%
 Reinforcement- #3 Rebar
 6.5"D knockouts 4 sides TRAFFIC RATED
 NOT TO SCALE