

5818 ROUTE 9H & 23 HUDSON, NY 12534

SEPTIC TANKS  
 DRY WELLS  
 D-BOXES  
 CATCH BASINS

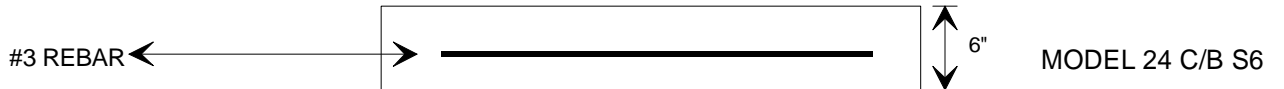
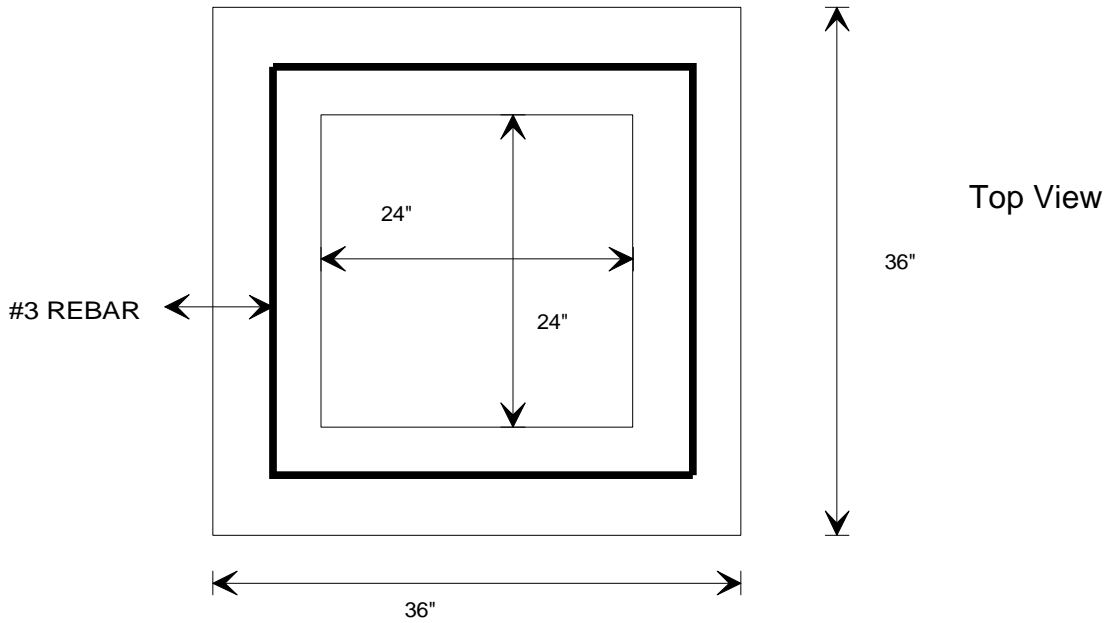
**KEELER  
 VAULT  
 CO.**

STEPS  
 CURBING  
 WHEEL STOPS  
 CUSTOM WORK

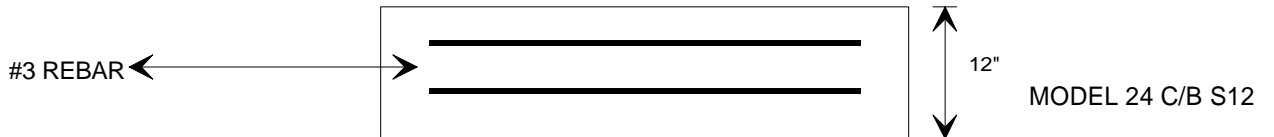
*PRECAST CONCRETE PRODUCTS*

**518-851-6281**  
**518-851-9134**  
**FAX 518-851-7835**

**24 C/B SHIMS  
 USED TO BRING CATCH BASINS TO GRADE**



Side Views



Specifications: Concrete minimum strength- 5000 psi at 28 days  
 Air entrainment- minimum 5%  
 Reinforcement- #3 Rebar

**WEIGHT: 6"-350 LBS.  
 12"-710 LBS.**