

5818 ROUTE 9H & 23 HUDSON, NY 12534

SEPTIC TANKS
 DRY WELLS
 D-BOXES
 CATCH BASINS

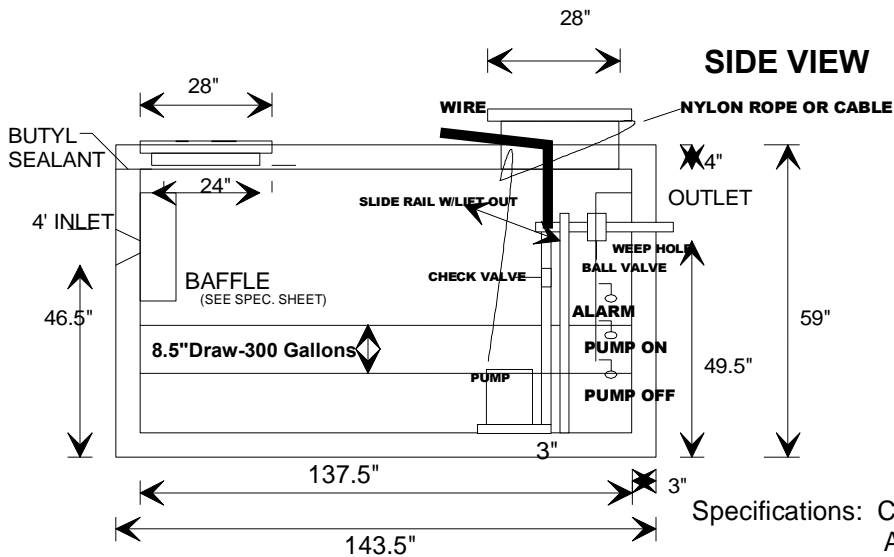
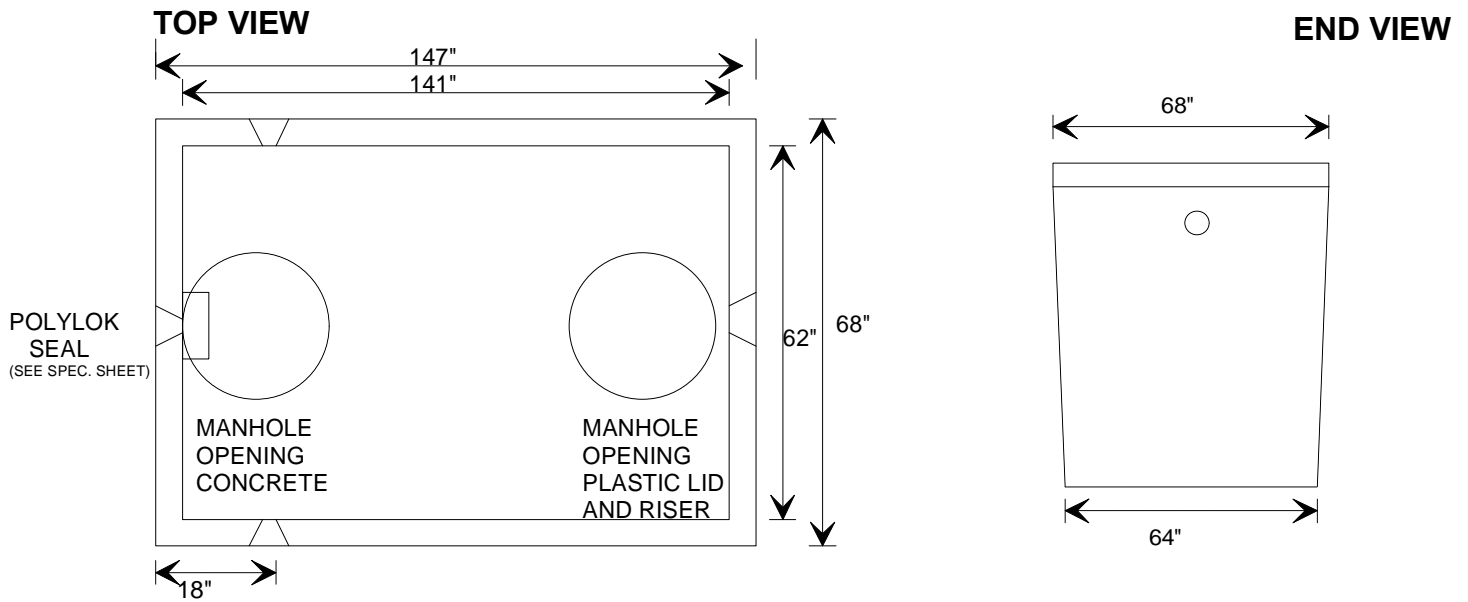
**KEELER
 VAULT
 CO.**

STEPS
 CURBING
 WHEEL STOPS
 CUSTOM WORK

PRECAST CONCRETE PRODUCTS

518-851-6281
518-851-9134
FAX 518-851-7835

MODEL 1500-P
STANDARD 1500 GALLON PUMP STATION
WITH DUPLEX/ALTERNATING PUMP
3 INLETS 1 OUTLET



PUMP OFF - 12"
PUMP ON - 20.5"
DRAW 8.5"---300 GAL.
ALARM - 23"
RESERVE-20.5"--711 GAL
MEASURED FROM TANK FLOOR

NOTES: TANK WAS REVERSED, TYPICAL INLET WAS USED AS OUTLET. DRAWING NOT TO SCALE.

Specifications: Concrete minimum strength-5000 psi at 28 days
 Air entrainment - minimum 5%
 Reinforcement- Base: Euclid Tuf Strand SF Fiber (6lbs./yd), #3 Grade 60 deformed rebar
 Lid: #4 Grade 60 deformed rebar
 Pipe connections - Polylok seals (patented)
 Baffles - Plastic inlet
 2- PE31M Gould Pump, check valve, ball valve, float bracket, lift out cable, slide rail w/lift out adaptor, outdoor control panel w/alarm

WEIGHT: 13,110 LBS.

MAXIMUM RECOMMENDED DEPTH OF COVER OVER TANK-3 FEET†

DRAW DOWN IS 300 GALLONS