

5818 ROUTE 9H & 23 HUDSON, NY 12534

SEPTIC TANKS
 DRY WELLS
 D-BOXES
 CATCH BASINS

**KEELER
 VAULT
 CO.**

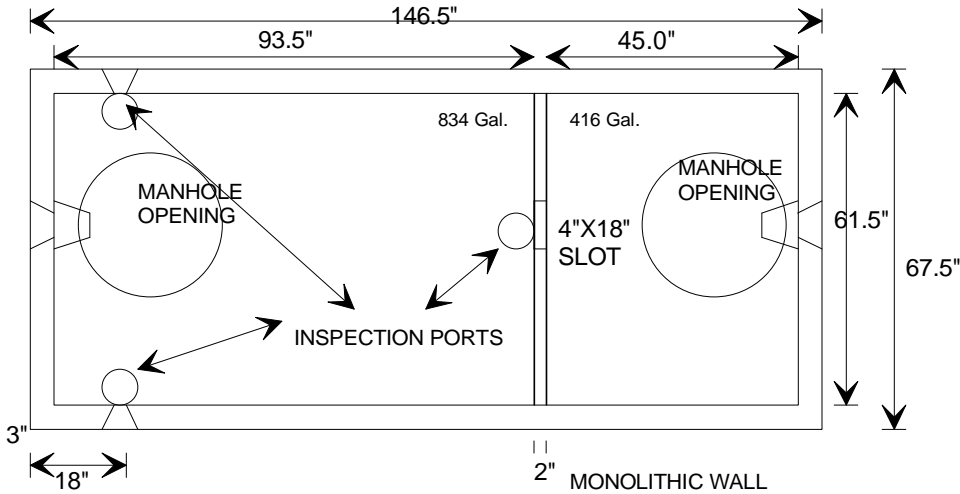
STEPS
 CURBING
 WHEEL STOPS
 CUSTOM WORK

PRECAST CONCRETE PRODUCTS

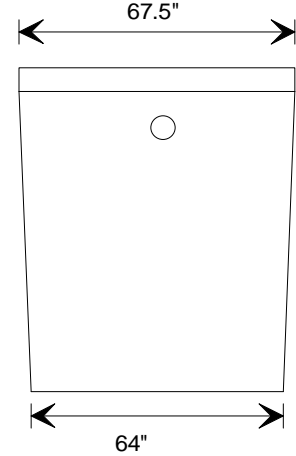
518-851-6281
518-851-9134
FAX 518-851-7835
www.keelervault.com

MODEL 1250-S2C
STANDARD 1250 GALLON SEPTIC TANK
TWO COMPARTMENT
3 INLETS 1 OUTLET

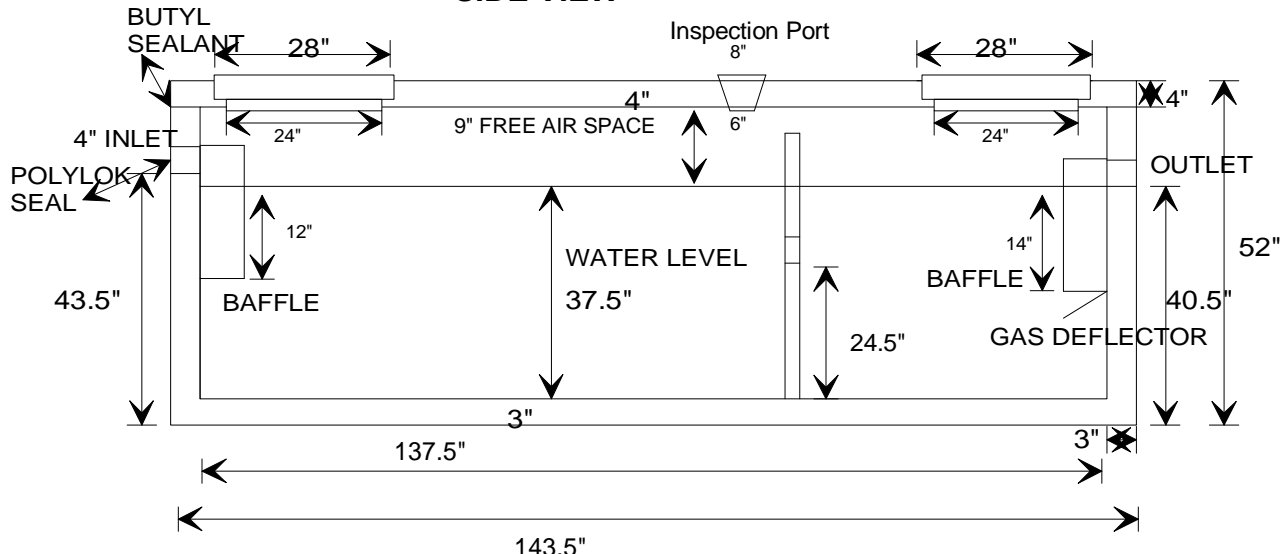
TOP VIEW



END VIEW



SIDE VIEW



Specifications: Concrete minimum strength-5000 psi at 28 days

Air entrainment - minimum 5%

Reinforcement- Base: Euclid Tuf Strand SF Fiber (6lbs./yd)

#3 Grade 60 deformed rebar

Lid: #4 Grade 60 deformed rebar

Pipe connections - Polylok seals (patented)

Baffles - Plastic Polylok inlet and outlet

w/gas deflector (patented)

Inspection ports above each pipe connect.

WEIGHT: 12,145 LBS.

MAXIMUM RECOMMENDED DEPTH OF COVER OVER TANK-3 FEET

SEE REVERSE SIDE FOR REINFORCEMENT POSITIONING